

# ***TubTimes***

**Official Newsletter of**

TYP\_356\_ne

**LITE**



VOLUME 17, ISSUE 1L, JANUARY 2017

## **HAPPY NEW YEAR 2017**



*Thanks to Bill Sooter for sending this great picture of a very early, snow covered, 356.*

## TYP356NE OFFICERS

*President*- Peter Venuti

*Vice President*- Allen Sisson    *Secretary*—Peter French

*Treasurer*—Dennis McGurk    *Membership Chairman*—Allen Sisson

*Website Coordinator* Gordon Nichols    *Newsletter Editor* -Ed Tobolski

*Past President*—Tom Tate

*Directors at large*-

Norman T. Brust, Ken Nykiel , Jeff Leeds, Greg Lane

## ATTENTION ALL MEMBERS

### 2017 MEMBERSHIP RENEWAL

**I**t is that time of year again to renew your TYP356ne club dues. 2017 club dues are due on 1/1/17 and overdue on 2/1/17. So, unless you are one of the few members that have paid several years in advance, or if you joined the club for the first time after October of 2016, it is time to pay your dues for 2017 now. The yearly club dues are the same as in past years, which is \$30.00.

If you plan to attend the Holiday/New Year Party, you can send just one check to cover your dues and party expenses. See page 3 for more party details.

Payment options are as follows:

- Club dues only for one year: \$30.00
- Club dues plus one attending the party: \$55.00
- Club dues plus two attending the party: \$80.00

Checks are to be made out to **TYP356ne** and mailed to:

Allen Sisson  
11 Spruce Way  
Medfield, MA. 02052

Allen Sisson, Membership Chairman, TYP356ne



**Everyone is invited to attend the 2017 Event Planning Meeting**  
**Saturday, January 7th, at the Burlington Public Library**

**T**he annual Event Planning meeting will again be held at the Burlington Public Library, 22 Sears St., Burlington MA, on Jan 7<sup>th</sup>, 2017. This is everyone's opportunity to be involved in the planning and organizing of our events for 2017. If anyone wants to suggest an event, lead a loafers lunch, arrange or suggest ideas for a tech session or other event, come to the meeting.

If you can't attend please send your thoughts to Peter Venuti at - [pvenuti@comcast.net](mailto:pvenuti@comcast.net)

The library opens at 10:00 and our meeting will start at 10:05. After the meeting we will have lunch at a local watering hole. Probably the Tex/Mex place nearby.

Note— this event will double as the TYP356ne Monthly Board meeting for January



**BLUE HILL**  
COUNTRY CLUB



## ***TYP356ne 2017 HOLIDAY/NEW YEAR PARTY***

The 2017 TYP356ne annual Holiday Gala will be held on Sunday, January 29th, Noon until 4 PM at the

***Blue Hill Country Club,***  
23 Pecunit Street, Canton, MA

The \$25.00 per person fee for those attending the party has dropped from last year. The party will feature the Signature Lunch Buffet, see menu below. There will be a cash bar available.

As usual, you may pay for BOTH the Holiday party and your yearly dues at the same time. Pay the \$25.00 per person fee for the Holiday party, along with your \$30.00, 2017 dues, with one check.

Please mail your checks, before January 21st, made out to **TYP356ne**, to:

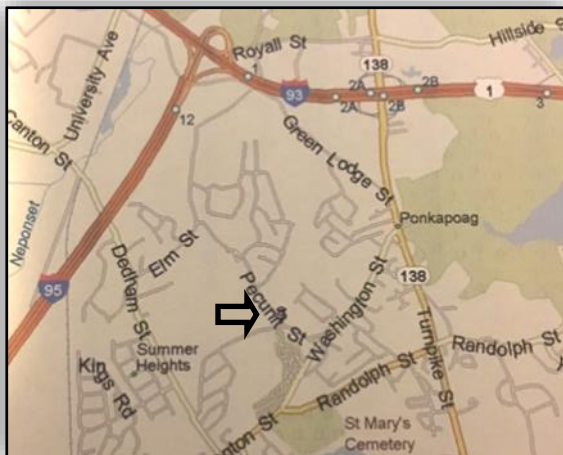
Allen Sisson  
11 Spruce Way  
Medfield, MA 02052

Dues only: \$30.00  
Dues plus one for the Holiday Party: \$55.00  
Dues plus two for the Holiday Party: \$80.00

The inclement weather date for the Holiday/New Year Party will be Sunday, February 12, 2017

The Blue Hills Country Club is just 5 minutes from Rte 128 (I93).

From Rte 128 take exit 2A onto Rt138 South.  
Turn right onto Washington Street then right onto  
Pecunit Street



### **SIGNATURE BRUNCH BUFFET**

Fresh Sliced Fruit Display  
Assorted Muffins, Breakfast Breads and Pastries  
Yogurt Parfait *with granola*

Salads:  
Mixed Green Salad  
*with seasonal toppings and dressings*  
Classic Caesar Salad

Club-Made Quiche  
Sausage Links and Crisp Hickory Smoked Bacon  
Breakfast Potatoes  
Fresh Seasonal Vegetables

Chicken Piccata *with citrus caper glaze*  
Smoked Salmon  
*with condiments and crostini*

Belgian Waffles  
*with bananas foster topping*

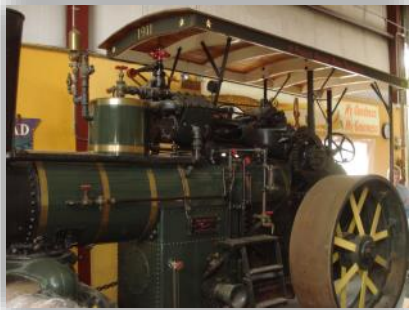
Chef's Seasonal Dessert Table

Fresh Brewed Coffee, Hot Tea, & Assorted Juices

**CASH BAR AVAILABLE**

# PHOTO REVIEW OF 2016

2016 was another fun year for TYP356ne. We had a number of gatherings throughout the warmer months, that included some of our traditional, as well as, new events. Thank you to all the members who put in the effort to make these events possible. Without you, they could not have happened. The following is a collection of TubTimes photos, of the events and the people that made the year great. To see a lot more pictures, go to the club website. [www.TYP356ne.org](http://www.TYP356ne.org)





**Kachel Open House**



**Lexington Loafers Lunch**



*2016 Featured Members*



*Odds and Ends!!*





*David Lawrence's featured 356*



*More Odds and Ends*



*Lime Rock*



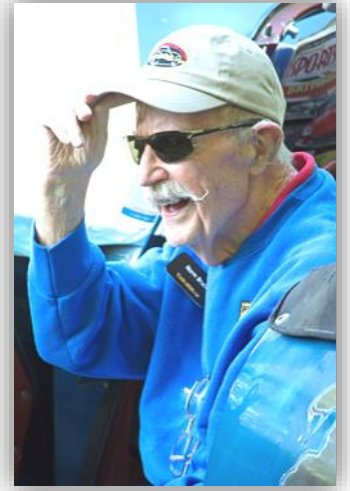
*Lobster lovers Loafers Lunch*



Second Annual  
Club Day

Sept 17, 2016

VINTAGE PORSCHE CLUB  
TYP 356 ne









*Vanilla Bean Tour*



*Conn. Shore Tour*



*Unobtainium*



## CLASSIFIED - FOR SALE/WANTED

### For Sale

Sharp looking shiny White 1960 coupe VIN 111621 with all new Red interior and windshield. Older street quality restoration with new battery bottom etc, no body work needed. Strong 1962 Super engine with 1960 case included. Has dual master cylinder brakes for safety and recent shocks and tires.

Picture file available.

Drive it home for \$42,742

Vic Zeller Westport MA. , 508-636-5379  
or [mzeller@umassd.edu](mailto:mzeller@umassd.edu)



.TYP356ne is not responsible for omissions, errors, misrepresentations, payments, etc relative to any classified advertisements.  
Buy at you own risk!! Send all for sale and wanted items to Ed Tobolski at [tobolsed@verizon.net](mailto:tobolsed@verizon.net). Items will be run once unless renewed



## CLUB ITEMS AVAILABLE

**Clothing-** TYP356ne has an online store where you can order hats, polo shirts, canvas bags, and any other item that Land's End Business Outfitters carry in their inventory. The store address is:  
<http://ces.landsend.com/TYP356ne>



You know it is our store because TYP356ne will appear in the upper left hand corner of the website. You can customize any of the items you purchase with the black oval patch and/or the gold TYP356ne script.



**Name Tags** - We have found a quality vendor that can make and ship you a personalized TYP356ne name badge. They are \$8.50 each with the pin style attachment and \$10.50 each with a magnetic attachment, plus \$3.95 postage. Note: the magnetic backing means you do not have to put pin holes in your TYP356ne polo shirt to wear your name badge.

To order go to <http://www.holmesstamp.com/category.aspx?categoryid=207> and click on the TYP356ne name badge and it will take you through the process. Within a few days you will have your personalized TYP356ne name badge delivered right to your door. If you have any comments or questions contact Tom Gentz at [tgentz@typ356ne.org](mailto:tgentz@typ356ne.org).

### Club Grille Badge

Club members can purchase the "Official Club Badge" for a cost of \$35.00. It is a beautiful badge. Contact Peter Venuti at [pvenuti@typ356ne.org](mailto:pvenuti@typ356ne.org) for further information.



# TYP 356ne

***LIFE'S TOO SHORT TO DRIVE BORING CARS!!!***

# TYP356NE – CLUB SPONSORS

## Meister Restorations

Owners: Rainer Cooney and Jerry Dascoli  
 Location: Rt. 28, North Barnstead, NH  
 Shipping (UPS etc) Address: 1414 Suncook Valley Rd  
 Center Barnstead, NH. 03225  
 Mailing Address: P.O. Box 846  
 Alton, NH. 03809  
 Tel: 603-776-3561



G.N. ENGINEERING

Owner: George Nelson  
 Tel: 617-333-0275  
 E-Mail: ggn356@comcast.net

Sales  
 Service  
 Bodywork



Owner: Richard MacKoul Foreign Car Repairs  
 220 Worcester St - Rt 122 Paint and Collision Experts  
 North Grafton, MA Used Car Inventory  
 Shop: (508) 839-2324 [mackoulscars.com](http://mackoulscars.com)

Metric Fasteners



**BelMetric.com**  
 Automotive Specialty Supplies

The Best Hardware for the Best Cars



**STUTTGART NORTHEAST**

Porsche & Mercedes Service  
 507 Maple Street, Danvers, MA 01923  
 978-777-3077

Owner: Jim Mallette  
 Toll Free: (877) 218-2195  
 Fax: (978) 777-9985  
 Email: [stuttgartne@comcast.net](mailto:stuttgartne@comcast.net)  
[www.stuttgartnortheast.com](http://www.stuttgartnortheast.com)

Timothy J. Kachel  
 425 Canal Street  
 South Lawrence, MA  
 617-759-8973  
 info@kmcauto.com

**KMC**  
 Kachel Motor Company

SPECIALIZING IN CUSTOM FABRICATION.  
 HIGH END CAR SALES & SERVICE.

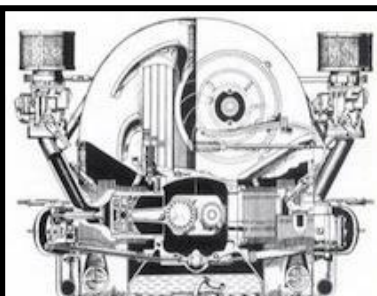



[www.kmcauto.com](http://www.kmcauto.com)

**Retro Automotive Products, LLC**

91 Main St. • Claremont, NH 03743 • [www.retroautomotiveproducts.com](http://www.retroautomotiveproducts.com)

Phone- 603-543-1006



**Jay Barry Company**  
 Porsche Expert on  
 1955-1989 Cars  
 89r Wingersheek Rd,  
 Gloucester, MA. 01930  
[jbarry.co@gmail.com](mailto:jbarry.co@gmail.com)  
 978-879-7185

THE CARRERA GRUPPE



Repair • Restoration  
 Customization • Fabrication

V 603 489 5060  
 F 603 489 5062

3 Owens Ct Unit 7  
 Hampstead NH 03841

[WWW.THECARRERAGRUPPE.COM](http://WWW.THECARRERAGRUPPE.COM)