



# TubTimes

Official Newsletter of

TYP 356 ne



**Bill Silvestri's beautiful 356A Coupe**

**Volume 24, Issue 07, August 2024**

For more Club information visit the Club's website - [www.TYP356ne.org](http://www.TYP356ne.org)

## TYP356NE OFFICERS



President— Allen Sisson



Vice President/  
Newsletter editor  
Ed Tobolski



Secretary—  
Theo Kindermans



Treasurer—  
Georg Becker-Birck

## WHAT'S IN THIS ISSUE?

- Vice Presidents Message, page 3
- New Member, page 3
- Guess Who, page 3
- Calendar of Events, pages 4 & 5
- Save the Date for Club Day, page 5
- Vanilla Bean Tour, page 6
- Southern Tour, pages 7 & 8
- Northern Tour, page 9
- Two Mountain Drive Cancelled, page 10
- Porsche Miles Driven, page 10
- John's Adventures with Porsches, page 11
- TubTech, Starting Problems, pages 12 & 13
- Classified, page 13
- 356 Market Place, pages 13 & 14
- Club Items, page 15
- Club Sponsors, page 16

## KEY MEMBERS-

Director—Immediate Past President

Peter Venuti



Director/Membership  
Chairman  
Carl Luck

Director

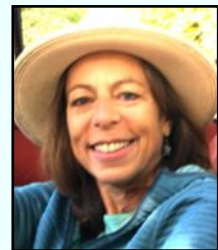
Tom Tate



Director  
George Kehler

Director

Greg Lane



Director  
Diane Mierz

Director

Peter Thompson



Director  
John Consigli

## Editorial

TubTimes is back on a monthly schedule now that we are in the middle of our busy season for events. This month I've covered several tours that were enjoyed by members. As long as I have events to cover I will have monthly issues.

We have a couple technical articles. John Consigli mentioned to me at the Southern tour that he was going to change a speedometer cable in a friend's 356C so I asked him to write an article about the process. See page 11. We have had several emails circulated to members about starting problems, so Carl Luck and I put together a few thoughts about the situation. See page 12. Hopefully you will find these articles helpful. Let me know your thoughts on how we can help the membership enjoy our 60 year old cars.

Guess Who? I had sent Allen the picture of Norm Brust with Ferry Porsche. To my surprise, Allen did not recognize Norm so we thought that it might be fun to see if the members (at least the old ones) could recognize one of our remarkable members who has passed. It is also a good way to remember Norm.

Ed. Tobolski, editor



## VICE PRESIDENTS MESSAGE— AUGUST 2024

Allen is traveling out of the country so I will try to fill in for his monthly message.

Club activity has been very high lately with several tours. The great thing about the tours this year is that they are scattered around the various sections of the region more than ever. South coast, North coast, Vermont, Connecticut, there are lots of opportunities to drive your 356 or other Porsche. All of them are covered in TubTimes and listed on the Club website—[www.TYP356ne.org](http://www.TYP356ne.org).

There are several more scheduled for the year, so join your fellow members on a tour. If you have never been on one of our tours, they normally consist of a late morning gathering at a well know location followed by a 1 to 2 hour ride together. With normally around 10 cars it's always a joy to be part of a line of Porsches. The ride is always leisurely, no high speeds, The waves and smiles from the people we pass on the road is a great part of the experience. I enjoy tooting the 356 horn as we pass. At the end of the drive we will stop at a great place for lunch picked out by the tour master.

While enjoying a leisurely lunch we can have the time to get to know the other members weather they be members we have know for a while or someone new to the Club. After lunch we will put some more miles on the Porsche enjoying a ride home. Weather is always an issue with these events. The tour master will make the call if any changes need to be made to the schedule.

The August and September months are also full of events around the country. Our schedule is designed to give you the opportunity to enjoy these events if your willing to do some traveling. Check them out, you may find something of interest. Note—some of those event may require advanced registration so act quickly.

Our major event of the summer is coming up. Club Day this year is scheduled for September 29th at Lake Pearl in Wrentham, MA. We have been to Lake Pearl several times and enjoyed the grassy areas and large tent. The tent is now gone, replaced by an all year round building. We will be among the first groups to use it. I expect it to be a first class site for our event. That combined with great food will result in a fun day. Save the date, more details to follow.

Ed. Tobolski, VP

### New Members *Welcome to the Club*

- Sam and Ruth Jernigan live in Newport RI and have a 1957 356 Speedster Replica
- Kamal El-Wattar, lives in East Calais, VT. has a 1965 356C and a 1967 911SC

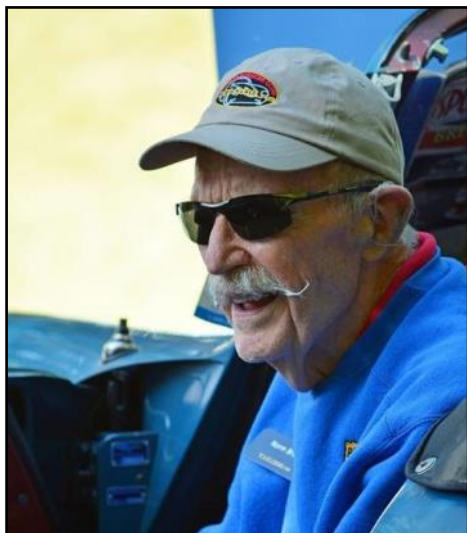
### Guess Who?

It's the late Norm Brust with Ferry Porsche. Norm was a long time member of TYP356ne and served as a board member for several years.

The picture was taken on the occasion of the PCA Parade in 1970 that was hosted by NER in the Boston area. I believe that Norm was the president of NER at the time.

Known for his blue cab that needed some paint, and never had its top up, Norm and his wife Jan were great fun people who enjoyed the open air driving in their 356. They were very active in the Club and seldom missed an event.

Many of us have fond memories of Norm and Jan. You can read more about Norm in the "In Memory Of" page on our website- [www.TYP356ne.org](http://www.TYP356ne.org)



## **TYP356ne Event Calendar for 2024**

Events in blue are Club organized and sponsored. All other events are not Club sponsored and are included for your interest. See the Club website for the latest complete information. [www.TYP356ne.org](http://www.TYP356ne.org)

### **August**

- Friday, August 2, 11:00am - 2:00pm [TYP356ne Northeast CT Drive and Lunch](#)  
Greg Lane and Diane Mierz will lead a backroads drive though Northeast CT ending at the Vanilla Bean Cafe in Pomfret, CT for lunch. See page 6 for the details
- Tuesday, August 6, 6:00pm - 7:00pm [TYP356ne Board Meeting](#)  
Board meetings are held by video conferencing on the first Tuesday of each month. All Club members are welcome to join. To join the call, email Peter Venuti [pvenuti@typ356ne.org](mailto:pvenuti@typ356ne.org) to get the link.
- August 9 - 18, [Monterey Car Week](#)  
Monterey, CA, See this link for details: [Monterey Car Week 2024 | Schedule of Events and Things to Know \(whatsupmonterey.com\)](#)
- Friday, August 16, 2024: 7:00am - 3:00pm [Werks Reunion Monterey](#)  
Monterey Pines Golf Club, 1250 Garden Rd, Monterey, CA 93940  
See details here: [Werks Reunion | Aug 16, 2024 | Monterey Events Calendar \(whatsupmonterey.com\)](#)
- August 30 - September 2, [Lime Rock Historic Festival 42](#)  
Lime Rock Park, 60 White Hollow Rd, Lakeville, CT 06039. See details at: [Event Tickets — TorkHub](#)

### **September**

- Tuesday, September 3, 2024: 6:00 - 7:00pm [TYP356ne Board Meeting](#)
- September 12 - 15, 356 [Catskills Tour](#)  
Riedlbauer's Resort, 57 Ravine Dr, Round Top, NY 12473. See our website for full details.
- Saturday, September 14, 10:00am - 1:00pm [TYP356ne Cars and Coffee](#)  
114 Larch Road, Wenham, MA. John Nai will host a 356 cars and coffee at his home and garage of Porsches with a brief talk.
- Thursday, September 19, Helen, GA - [Highway 356 Reunion](#)  
Tanglewood Cabins Rentals & Deer Crossing Lodge, 3387 GA-356, Sautee Nacoochee, GA 30571.  
See details here: [Helen, GA - Highway 356 Reunion - Events - Porsche 356 Registry, Inc.](#)
- Sunday, September 22, 10:00am - 1:00pm [TYP356ne Drive Your Porsche Day](#)  
New London, CT. Georg Becker-Birck and Greg Lane will arrange a 356/912 drive to celebrate Drive Your Porsche Day. Details to be announced.
- Sunday, September 22nd [Drive Your Porsche Day](#).  
The 356 Registry holds an annual "Drive Your 356 Day" in September.  
[Drive Your 356 Day - Porsche 356 Registry, Inc.](#)
- Sunday, September 29, 10:00am - 2:00pm [TYP356ne Club Day](#)  
Lake Pearl, 299 Creek St, Wrentham, MA 02093  
We will meet at 10 AM on the lawn at Lake Pearl for a couple of hours to talk and view cars. From 12 to 1 PM we will have lunch and at 1 PM there may be a speaker. Look for full details in TubTimes and by email.
- September 29 - October 3, [PCA Treffen Mt. Washington](#)  
Omni Mount Washington Resort, 310 Mount Washington Hotel Rd, Bretton Woods, NH 03575  
Find details here: [Treffen Mount Washington - Fall 2024 \(pca.org\)](#)

## October

- Tuesday, October 1, 6:00pm - 7:00pm [TYP356ne Board Meeting](#)
- October 3 - 6. **Audrain Motor Week**  
Newport, RI. Find details here: [Audrain Newport Concours and Motor Week \(audrainconcours.com\)](http://audrainconcours.com)
- October 8 - 11, **Hershey AACA Eastern Fall Car Meet and Sale**  
Find details here: [2024 Eastern Fall \(Hershey\) - AACA - Antique Automobile Club of America](#)
- Thursday, October 10, 10:00am - 1:00pm [TYP356ne Drive and Lunch](#)  
Bolton Bean, 626 Main St, Bolton, MA 01740, USA  
Theo Kindermans will lead a back roads drive from Bolton Bean [Home | Bolton Bean](#) in Bolton, MA (just off Route 495) via Wachusett Mountain State Reservation [Wachusett Mountain State Reservation | Mass.gov](#) (for a rest stop) to the Harvard General Store [Harvard General Store](#) 1 Still River Road, Harvard, MA for lunch. The drive will be approximately 42 miles.
- Saturday, October 19, 2024, **5th Annual Boardwalk Reunion, Ocean City, NJ**  
The Flanders Hotel, 719 E 11th St, Ocean City, NJ 08226, USA  
PCA Zones 1 & 2, supported by the 356 Registry, <https://boardwalkreunion.org/>

## November

- Tuesday, November 5, 6:00pm - 7:00pm [TYP356ne Board Meeting](#)

## December

- Saturday, December 7, 10:00am - 12:00pm [TYP356ne Annual 2025 Event Planning Meeting](#)  
Sherborn Community Center, 3 Sanger St, Sherborn, MA 01770.

## January

- Tuesday, January 7, 2025 6:00pm - 7:00pm [TYP356ne Board Meeting](#)

## February

- Sunday, February 2, 2025 11:00am - 3:00pm [TYP356ne Annual Holiday Party](#)



## Save the Date- Sunday, September 29th.

For

## Club Day 2024

This year's Club Day will again be held at  
Lake Pearl in Wrentham, MA.

The venue will be completely new this year. They have removed the old tent and replaced it with a new all year round building.

Look for full details in the next issue of TubTimes and in your emails.

Note- we are looking for a speaker for the event.

Let Ed Tobolski know if you have any ideas.

[tobolsed@verizon.net](mailto:tobolsed@verizon.net)

## Upcoming Driving Event



### Vanilla Bean Drive, NE Connecticut Friday, August 2<sup>nd</sup>, 2024

Greg Lane and Diane Mierz will lead a backroads day drive though Northeast CT ending at the Vanilla Bean Cafe in Pomfret, CT for lunch. While the acclaimed Vanilla Bean Cafe has previously been the endpoint for TYP356ne drives, this time we will actually explore the beautiful and historic roads of northeast Connecticut.

To date, 11 Porsches and 17 people have signed up. Get in touch with Greg soon if you plan to join this event. Details are below:

#### Details:

- **Date:** Friday, August 2nd
- **Meeting Time:** 10:45am. Arrive with full tank. Empty your other tank at Dunkin's.
- **Start time:** 11:00am
- **Meeting point:** Dunkin Donuts at Webster MA, to the right off exit #1, I-395. 170 Thompson Road. (just north of MA-CT state line). Park to the rear of the building.  
**NOTE!** There are two Dunkins on Thompson Road! Don't go to #144.
- Tour drive time: Approximately 2 hours.
- Endpoint: Vanilla Bean, Pomfret CT, 450 Deerfield Road. <https://thevanillabeancafe.com/>

**Registration:** Email Greg Lane ([gkamlane@comcast.net](mailto:gkamlane@comcast.net)) with the following:

- Name and guest
- Car, model, year and color (backup car as well)
- Cell number

**Questions?** Call or text Greg (475-201-5378) or Diane Mierz (203-671-8920)

Hope you can join us! Greg and Diane



# Recent Events

## South Coast Drive and Lunch

Tom Coughlin has been doing the Southern Drive for several years and has always been able to find some new roads to follow. This year was no exception. The weather cooperated with a beautiful day cruising around the Southern shore of Massachusetts with an interesting collection of Porsche models, a Boxster, a 911, a 914, a 912, and at least 5 356s. An hour and a half drive was great fun, except for the short section of dirt road, see picture. Tom was totally surprised and shocked. We all had to wash our cars off when we got home, no problem.

Ending at the Acoaxet Club we had a great lunch with our fellow members. All together a fun day on the South Coast, thank you Tom.



Our Leader



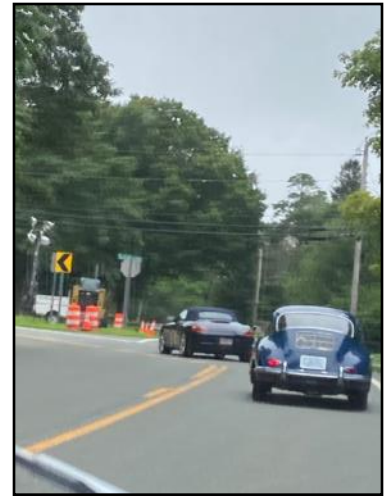
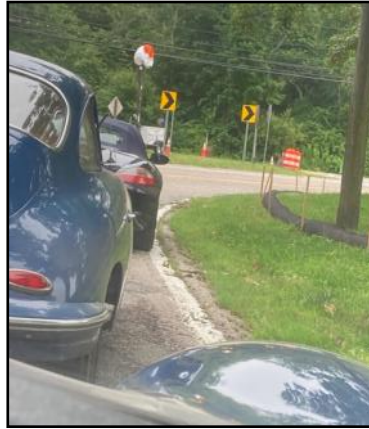
Gathering at Partner's



*South Coast Drive Pictures*



Surprise dirt road!!!



Lunch at the Acoaxet Club





## North Coast Drive



On Sunday, July 14th there was an excellent turnout of 356's north of Boston. John Nai put together a unique tour. He found some roads none of us had seen before! Traffic was very light, sun shining as we drove hither and yon ending up at True North brewery in Ipswich.

It has been a long minute since I attended a NS drive. Dennis McGurk let me drive his sublime roadster. The best part to reconnecting with so many old friends.

Thanks John for putting this tour together! Fran Deleo



## Vermont Two Mountain Gap Drive Cancelled

Georg Becker-Birck has cancelled the Saturday, July 27th, Vermont two mountain drive. This is a great drive that will be rescheduled to a date that better fits our schedule. Georg is interested in hearing from anyone who has any thoughts about the event and when it is best suited to happen. We will be discussing this at our board meetings and any comments are appreciated.

[gbeckerbirck@typ356ne.org](mailto:gbeckerbirck@typ356ne.org)



## **Porsche Miles Driven in 2024**

	<u>Porsche</u>	<u>2024 Miles</u>
Phil Brzezinski	2006 Carrera	810
Ed Fanning	356A Mel	853
Randy Robinson	356B	217
Bill Slinko	912	250
Theo Kindermans	356B Sunroof	427
Ed Tobolski	356A Coupe	368
Ed Tobolski	911SC Coupe	344
Al Hanmer	68 912	45
Tod Beaty	356C Cab	214
Greg Lane	356B	494
Greg Lane	Boxster S	1976
Carl Luck	356A Coupe	879
Tom Gentz	1967 911	74
Weld Morse	356B Cab	249
Ray Ashenhurst	356B Cab	347
John Henry	356C Coupe	410
Steve Turino	356B Coupe	460
Steve Turino	Boxster S	816
Peter Thompson	356	350
Peter Thompson	911	650
Peter Thompson	Boxster S	675
Diane Mierz	356SC Cab	1794
Allen Sisson	356B S90 Coupe	1059
George Kehler	Pre A 356 Coupe	205
John Consigli	356C Coupe	120
John Consigli	914	90
Georg Becker-Birck	912	536
Neil Fennessey	O'l Blue 912	1590

Total 16302



# John's Adventures with Porsches!!!!

By John Consigli

## Replacing a speedometer cable on a 356 is not a difficult task when you plan ahead and know the process.

Remove the speedometer cable from the back of speedometer by unscrewing the knurled nut, see Figure B, and pulling the cable out of the speedo. You should be able to do this without removing the speedometer. Jack up your left front wheel, use a jack stand, and remove the front wheel.

The end of the speedometer cable protrudes through the dust cap on the left front spindle through the use of a square cable that is secured with a cotter pin and small washer, see Figure A. Remove the cotter pin, then, with a flat pry bar or small claw hammer, remove the dust cap from the front brake spindle assembly. Pull the cable out from the back of the stub axle until the cable is free.

Your next step in removing the old cable, is to attach a metal snake with electrical tape to the end of the cable that you just removed from the stub axle. The type of snake used is one that an electrician uses to run electrical wires through a house or building. If you don't have access to a snake, try using some electrical wire.

Pull the speedometer cable with attached snake through the front bulkhead of your car into the area above the emergency brake assembly inside your car. Once the snake is inside your car, remove the tape releasing the old cable. Remove the rubber boot (item 3 in Figure B) from the old cable and carefully slide it onto the new cable.

Next, tape the snake to your new, replacement, speedometer cable. Then, from under the car, using the snake, pull the new cable into position. Instead of trying to yank or force the snake to turn at a 90 degree angle and pull it down to the left spindle assembly, guide it gently, through the bulkhead and try for an angle on the cable that doesn't get the black sheathing stripped off the new cable from scraping hard against the front bulkhead above your

emergency brake assembly, when you pull the cable left and downward. Once you've got the cable through the bulkhead and in position, remove the snake and push the cable into the hole on the back of the stub axle until it protrudes out the front of the axle.

Note - Check the rubber grommet (item 3 in Figure A) on the stub axle assembly where the speedometer cable slides in. Chances are, the rubber grommet has deteriorated and according to a Vic Skirmants's article from the 1990's, published in The 356 Registry, the grommet was not available back then. (However, I just learned that the grommet that Vic referred to, which wasn't available when the article was written, is currently available today from Stoddard, part number 644-741-121-00.) If you decide to bypass the new rubber grommet, Vic recommended using a rubber silicone sealant around the stub axle where the cable pushes inside the axle, in the absence of a rubber grommet that wasn't available when he published the article. Vic also recommends using a dab of silicone sealant where the square end of the cable protrudes through the dust cap. Vic has stated that sealant on the backsides of the stub axle and on the dust cap, will prevent water from penetrating and deteriorating your wheel bearing.

Once the end is through the axle, line up the small, square end of the cable with the square opening in the dust cap. Tap the dust cap onto the center of the spindle so that it is secure and install the little washer and the cotter pin into the cable end. Reinstall the left front wheel. Reconnect the speedometer cable to the speedometer and you are ready to go.

John

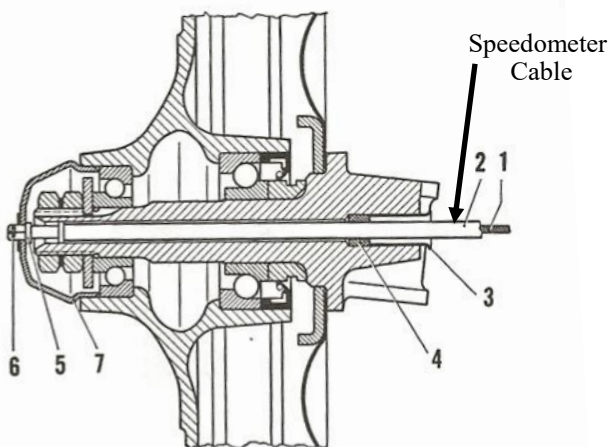


Figure A, left front wheel spindle stub axle assembly  
Note- this drawing is of a VW assembly which is similar to the 356's.

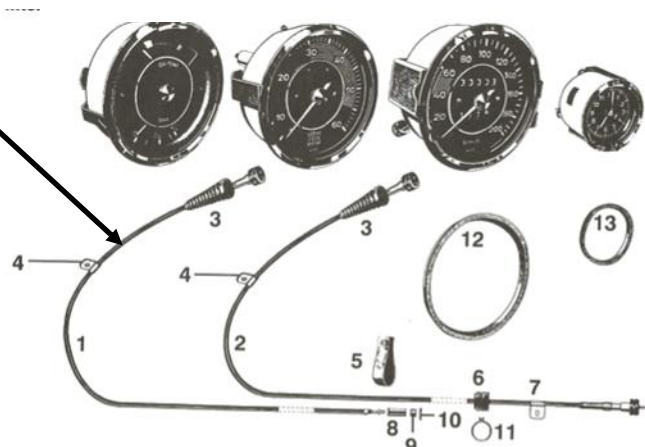


Figure B, Speedometer and Tachometer cable assemblies.

### What to do if your 356 won't start!! By Ed Tobolski and Carl Luck

We have seen emails recently from members who had problems starting their 356. Here are some quick troubleshooting tips to help you get it started.

These tips assume that the engine was running ok with no serious problems like lack of compression or timing issues. The starter is working, turning the engine over, but it won't start.

The two main ingredients required for the engine to run are gas and electricity. Here are some ways to determine if these are working.

#### Gas

First make sure there is gas in the tank and the shutoff valve is in the open (AUF) position.

The easiest way to see if there is gas in the carburetors is to remove the air cleaners and look into the throat of the carb. (see picture) and pressing the throttle down quickly. There should be a stream of gas coming from the accelerator pump jets into each (2 per carb) throat of the carb. If you see the gas flow there is gas in the carb bowl. You can check both carbs but usually if one is full, gas should not be the problem. The engine should start or at least pop, if only one carb has gas.

If there is no gas at the carbs, then the problem may be in the fuel line. These 60 year old lines can be a problem as Ray Ashenhurst found out. I put an electric fuel pump in my A coupe several years ago. While driving the car on a very hot August day the engine died. After I got it back home, I found that the hose that went from the shutoff valve to the new pump had kinked from the heat stopping the flow of gas. I replaced the line with a stiffer but smaller od line and it's been fine since.



#### Electricity

Turn the ignition switch to the on position so that the instrument lights are on.

There are several ways to check for electricity at the engine.

- Use a meter, set to measure voltage, or a simple light probe, like the one shown in the picture below. To determine if there is power to the engine, you have to connect one probe to the correct terminal and the other to a ground point. The input terminal on the coil is always hot so you should get about 6 volts there, see picture below. If you connect to the output side of the coil or the input connection on the side of the distributor the voltage will only be 6 volts when the points are open. When they are closed the voltage will go to zero. You can turn the crank to get the points to open.
- You can always pull a spark plug. Leaving it connected to the cable hold the plug tip against a ground point, see picture, and try to start the engine. You should see a spark at the gap in the tip of the plug. Using this method, you are checking the whole system, coil, points, distributor. Note— a little caution here, make sure your hand is isolated from the plug, the voltage is quite high when it fires. It will get your attention and you will immediately know that you have power!!
- A timing light would also work, just connect it to any spark plug cable and see if it flashes when the engine turns over.



If you have power to the distributor there still might be a problem with it. Several years ago I had my engine die in my garage. I changed the condenser and it started. Condensers have been a problem. If you have one that works, don't change it, they don't wear out!!! I carry a spare known good distributor with me all the time set up to quickly be installed if necessary.

## Additional Comments about starting your 356

Whenever anything goes wrong or doesn't work, the first place to look is at the last area you, or your mechanic, worked on. Not all new parts are reliable and the area around the work is also subject to unintentional consequences, oppps's like knocking off a line or wire. Also, when it's electrical, most of the issues are connection related.

When our carbureted cars sit for a while, the gas will evaporate and they may be hard to start. Ed (as mentioned above) installed an electric pump to solve the problem and Carl installed a boat primer pump, clear filter and shut off valve before the fuel pump plus clear filters at the input to each carb. Not only does this help significantly with starting, it also allow the gas to the carbs to easily be turned off. For trouble shooting these provide easy confirmation that there is fuel, at each filter, independent of the fuel pump.

Ed and Carl



## CLASSIFIED

TYP356ne is not responsible for omissions, errors, misrepresentations, payments, etc. relative to any classified advertisements. Buy at you own risk!! Send all for sale and wanted items to Ed Tobolski at tobolsed@verizon.net. Items will be run once unless renewed

### For Sale

Rear B Brake Drum restored by J and G Relining for sale. Never used. \$550.00  
Jim Stein 15083140581

## 356 Market Place

Some odds and ends that sold on Bring a Trailer recently



Engine Lid and Luggage Rack for Porsche 356

Sold for **\$1,756** on 6/26/24



Porsche 356B Tool Kit

Sold for **\$3,800** on 7/5/24

## 356 Market Place

There are a large number of Porsche 356 sales transactions on Bring-A-Trailer (BaT). Check them out.  
[Porsche 356 For Sale - BaT Auctions \(bringatrailer.com\)](https://bringatrailer.com)

Below are a few recent auction results of 356s



1963 Porsche 356B 1600S Coupe  
Sold for **\$70,000** on 7/1/24



1961 Porsche 356B Sunroof Coupe  
Sold for **\$55,550** on 7/16/24



1961 Porsche 356B Coupe  
Sold for **\$105,356** on 7/23/24



1964 Porsche 356C Coupe Project  
Sold for **\$43,000** on 7/2/24



1961 Porsche 356B 1600S Coupe  
Sold for **\$62,500** on 7/9/24



Modified 1956 Porsche 356A Sunroof Coupe  
Sold for **\$160,000** on 7/17/24

## CLUB ITEMS AVAILABLE

**Clothing**- TYP356ne has an online store where you can order hats, polo shirts, canvas bags, and any other item that Land's End Business Outfitters carry in their inventory. You can customize any of the items you purchase with the Club's black oval patch. The store address is:

<http://business.landsend.com/store/typ356ne>

When you are on the site, select the product you want to purchase and the quantity. Then select the Apply Logo box and a page will come up with Logo 1. Follow the instructions to complete your order.



**Name Tags** - We have found a new vendor at [nametagwizard.com](http://nametagwizard.com) who can make you a personalized TYP356ne name tag. All name tags come with a magnetic attachment which means you do not have to put pin holes in your TYP356ne polo shirt to wear your name tag. They are \$11.48 each plus fees and shipping. Payment can be made by credit card or PayPal.

**ED TOBOLSKI**

**TYP356NE**

Email Ed Tobolski, [tobolsed@verizon.net](mailto:tobolsed@verizon.net), and he will send you the detailed directions you need to order the name tags online. Follow the directions and within a few days you will have your personalized TYP356ne name tag delivered right to your door.

### **New Club Grille Badge**

Club members can purchase the "Official Club Badge" for a cost of \$36.00. It is a beautiful badge complete with mounting hardware.

To order a badge, first contact Peter Venuti at - [pvenuti@typ356ne.org](mailto:pvenuti@typ356ne.org) and give him your mailing information. Payment can then be made by PayPal on the club website.



**TYP 356 ne**

**LIFE'S TOO SHORT TO DRIVE BORING CARS!!!**

## TYP356NE – CLUB SPONSORS

www.acsracing.com • www.acsracing.com

**=A·C·S=**  
**RACING**  
Tuning for the Future  
Dynojet Tuning Facility

781-982-9434

74 Industrial Way Hanover, MA 02339  
fax: 781-982-4833

"FEAR WHEEL HORSEPOWER IS REAL WORLD HORSEPOWER"



**Three decades of trusted Porsche service.**  
Providing comprehensive mechanical repair, restoration, and maintenance for all air-cooled and water-cooled Porsche models.

COMPETITION • STREET • VINTAGE  
**SPEEDSPORT**  
TUNING.NET

203-730-0311  
service@SpeedSportTuning.net  
SpeedSportTuning.net • 52 Miry Brook Road, Danbury, CT 06810  
facebook.com/SpeedSportCT @speedsporttuning



**Retro Automotive**  
**Products, LLC**

247 Sullivan St. • Claremont, NH 03743 • Toll Free 1-866-737-1733

I BUY OLD PORSCHE  
COLLECTOR IS LOOKING TO BUY  
356's, 912's or early 911s.  
Call Robert Shelbourne at 215 809 4900  
Gt3rs550@gmail.com